

DATASHEET



FttH MDU 25x40 duct set cream

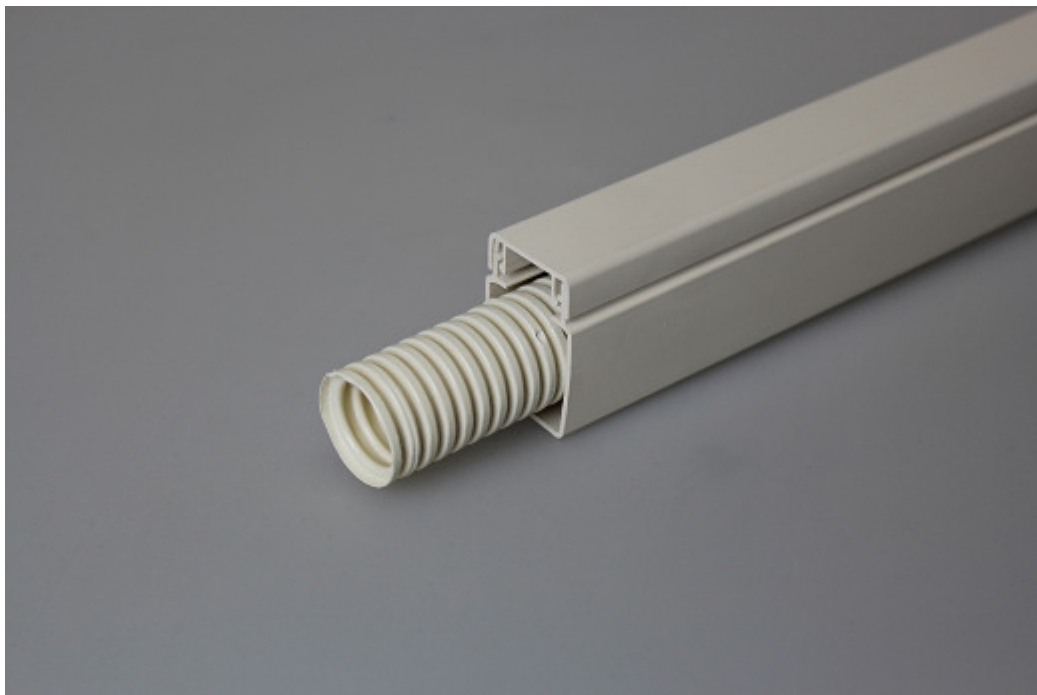
Article number: 29110

Product description

The FttH Multi Dwelling Unit 25x40 duct set is a combination of a 2 meter cable duct with a 1,5 meter flex tube inserted. This set can be used for the installation and transit of fiber glass cables in Multi Dwelling Units (MDU) with a neat visual finish.

Features and Benefit

- Complete set
- Provides protection for the fiberglass cables
- Durable
- Easy installation
- Neat visual finish



Colours

Cream (RAL 1013)

Article number

29110: FttH MDU 25x40 duct set cream

Packaging

Duct sets packed per : 4 pcs.
EAN-number per peace: 8712259330006

All products suitably packed in recyclable materials and clearly labelled with Attema article number and description.

Physical characteristics cable duct

Color: Cream
Length: 2000mm
Width: 25mm
Height: 40mm
Material: Extruded plastic

Physical characteristics flex tube

Color: Cream
Length: 1500mm
Tube dimension: 25mm
Material: Extruded plastic

END OF DATASHEET

www.attema.com